

3032 INVERTED MICROSCOPE SERIES

ACCU-SCOPE® microscopes are engineered
to the highest quality standards



ACCU-SCOPE® *Delivering Quality thru Vision*

Components

A Eyepieces

Large viewing area with extra wide field focusable 10x eyepieces with a 22mm field of view and rubber eyeguards. Eyepieces accept 26mm reticles.

B Viewing Head

A 30° viewing angle for ergonomic comfort with an interpupillary distance adjustment range of 48 – 75mm assures fatigue free viewing during extended observation sessions. An optional tilting ergonomic viewing head with a variable inclination can provide additional user comfort.

C Nosepiece

Side facing revolving quintuple nosepiece enables maximum flexibility for a wide range of magnification observations and a variety of objective combinations.

D Objectives

Featuring ACCU-SCOPE's AIS infinity optical system these objectives offer high N.A.'s and long working distances. A wide variety of plan, plan phase and plan fluor objectives are available.

E Stage

The standard configuration is supplied with a fixed plain stage. The stage can be widened on both sides to accommodate large specimens with the included paired auxiliary stage plates. A hard coating protects the stage from scratches and wear. Two metal insert plates and a glass stage insert plate is included for simple confirmation of the objective in use.

An optional ergonomic mechanical stage with low position right-hand controls is available. Stage movement is 120mm (X) by 78mm (Y). These optional specimen holders are available for use with the mechanical stage: Teraski holder (accepts Ø65mm petri dish), Ø38mm petri dish holder and a slide glass holder (accepts Ø54mm petri dish).



Standard Stage Configuration



Optional ergonomic mechanical stage

F Condenser

The ELWD condenser with N.A. 0.3 and LWD 72mm provides bright even illumination for magnifications from 4x to 40x with an aperture diaphragm. With the condenser removed the working distance is 150mm.

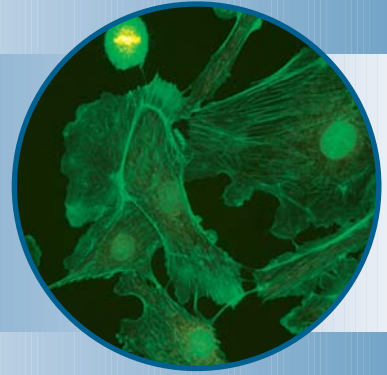
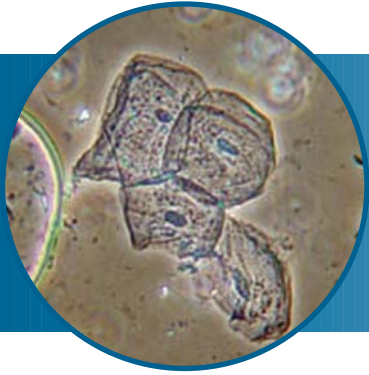
G Phase Contrast

Designed to improve user efficiency for routine tasks the pre-centered phase contrast slider allows for quick, adjustment free observation. The Ph 1 annulus is for the 10x and 20x and the Ph 2 position is for the 40x. A third position is left empty for Ø45mm filters.

H Illuminator

A pre-centered 6 volt 30 watt variable halogen illuminator provides bright, even illumination at all magnifications. Built-in frosted and heat absorbing filters.





Excellent Performance and Value in Routine Fluorescence Observation

Featuring ACCU-SCOPE's AIS plan fluor optics, this system incorporates B and G excitations as standard on a 3 position filter cube slider. The integrated 100 watt mercury light illuminator and high resolution AIS plan fluor objectives provide unsurpassed performance and value for routine fluorescence observation. A wide variety of excitation cubes are available, allowing the system to be easily customized according to user requirements.

Digital Imaging Systems Make Documentation Easier Than Ever Before

Micrometrics® cameras and image analysis software with an integrated database is a user friendly tool for image archiving, measurement, annotation, advanced image processing, fluorescence image composition, multi-focus composition and spherical aberration correction.

One Click Does It All

With Micrometrics® software the user can capture and save an image including the microscope and camera settings, specimen and patient information. Using the integrated database all of the information is linked to the image and can be recalled with one click.



3032 INVERTED MICROSCOPE SERIES

SPECIFICATIONS

| | |
|--------------------------------|--|
| Optical System | Infinity optical system, F=180mm |
| Observation Method | Brightfield, Phase Contrast, Fluorescence |
| Viewing Bodies | Siedentopf style, trinocular tube inclined 30°. Standard configuration Light distribution: Binocular 100%, binocular/photo 20%/80%. For fluorescence units light distribution is 100% binocular or 100% photo. Interpupillary distance is adjustable from 48mm to 75mm. Eyepoint height: 400 mm from the table. An optional ergonomic tilting viewing head is available. |
| Eyepiece | Extra wide field focusable 10x eyepieces with 22 mm field of view and rubber eyeguards. Eyepieces accept 26mm reticles. |
| Nosepiece | Quintuple side facing with positive click stops |
| AIS Infinity Objectives | LWD Plan or Plan Fluor 4x, 10x, 20x & 40x. LWD Plan Phase 10x, 20x & 40x. |
| Stage | Fixed plain stage 160 x 250mm. Auxillary stages. Optional attachable mechanical stage, low position right handed coaxial controls, 120 x 78 mm movement range |
| Stage Plates | Glass and metal stage plate inserts. |
| Focusing Mechanism | Vertical revolving nosepiece (fixed stage). Coaxial coarse and fine focus mechanism with markings on fine focus knobs. Coarse stroke 37.7mm per rotation, Fine focus adjustment 0.2mm per turn |
| Illumination | 6 volt 30 watt halogen; variable intensity. External lamp house for Kohler illumination |
| Filters | Ø 45mm Clear blue, green and ground glass |
| Stand | Cast alloy aluminium, Weight 19 lbs. External Dimensions: 515mm x 248mm x 473mm (LWH) |

PRECONFIGURED SYSTEMS

| Specification with AIS Infinity Optical System | | | Catalog No. | 3032 | 3032PH | 3032-EPI |
|--|--|----------------------------|-------------|------|--------|----------|
| AIS Infinity Objectives | Plan Achromat Brightfield | AIS PL 4x | 32-3173-PL | ● | ● | |
| | | AIS PL 10x | 32-3174-PL | ● | | |
| | | AIS PL 20x | 32-3178-PL | ● | | |
| | | AIS PL 40xR | 32-3175-PL | | | |
| | Plan Achromat Phase | AIS PL PH 10x | 32-3174-PH | | ● | |
| | | AIS PL PH 20x | 32-3177-PH | | ● | |
| | | AIS PL PH 40xR | 32-3175-PH | | | |
| | Plan Fluor | AIS PL F 4x | 32-3173-F | | | ● |
| | | AIS PL F 10x | 32-3174-F | | | ● |
| | | AIS PL F 20x | 32-3177-F | | | ● |
| AIS PL F 40x | | 32-3175-F | | | | |
| Eyepieces | EWF10x/22 focusable with rubber eyeguards | 25-3113 | ● | ● | ● | |
| Viewing Head | Trinocular viewing head (Light distribution 100% binocular or 20% binocular / 80% trinocular) | 25-3158 | ● | ● | | |
| | Trinocular viewing head (Light distribution 100% binocular or 100% trinocular) | 25-3158-100 | | | ● | |
| | Ergonomic tilting binocular | 32-3155-E | | | | |
| Photo/Video Adapters | Photo Tube | 32-2000 | ● | ● | ● | |
| | 0.52x c-mount camera adapter with photo tube | 2005-5 | | | | |
| Digital Camera System | Micrometrics® digital camera w/Micrometrics® SE Premium software | 318CU,190CU 390CU,590CU | | | | |
| Stage & Inserts | Attachable mechanical stage, right hand, low drive controls, Stage Movement X = 120mm, Y = 78mm | 32-3213 | | | | |
| | Glass stage insert | 32-GSI | ● | ● | ● | |
| | Metal stage inserts | 32-MSI | ● | ● | ● | |
| | Ø 35mm petri dish holder | 32-35PD | | | | |
| | Glass slide holder (accepts Ø 54mm petri dish) | 32-54SGH | | | | |
| | Teraski holder (accepts Ø65mm petri dish) | 32-TH | | | | |
| Condenser | Detachable ULWD condenser, N.A. 0.3, W.D. 72mm | 32-3221 | ● | ● | ● | |
| Contrast Slider | Pre-centered phase contrast slider - 10x/20x, 40x, empty filter slot | 32-PHSL | | ● | | |
| Fluorescent Illuminator | 3 position filter slider with B & G cubes, option for additional cubes, Lamphouse for 100w Mercury Lamp, Power Supply for Mercury Lamp, HBO 100W/2 mercury lamp, UV protection barrier | 25-3231 | | | ● | |

● indicates standard accessory.

ACCU-SCOPE INC.

7 Littleworth Lane, Sea Cliff, NY 11579

Phone: 516-759-1000 Fax: 516-674-3309

email: info@accu-scope.com www.accu-scope.com

